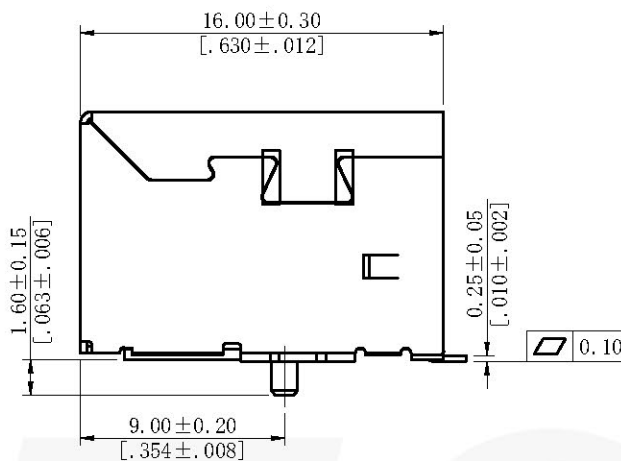
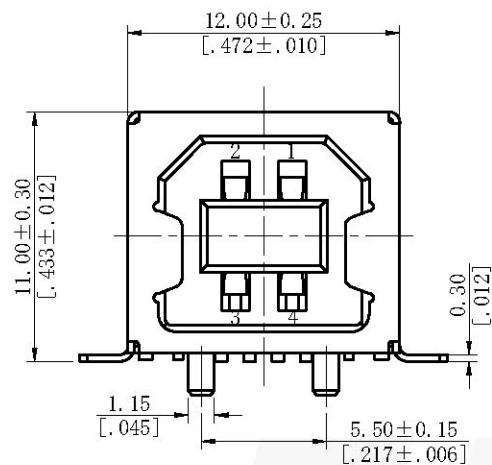
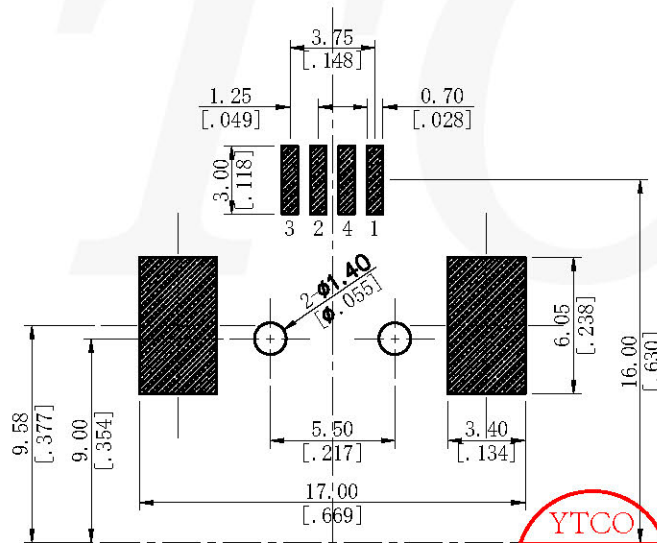
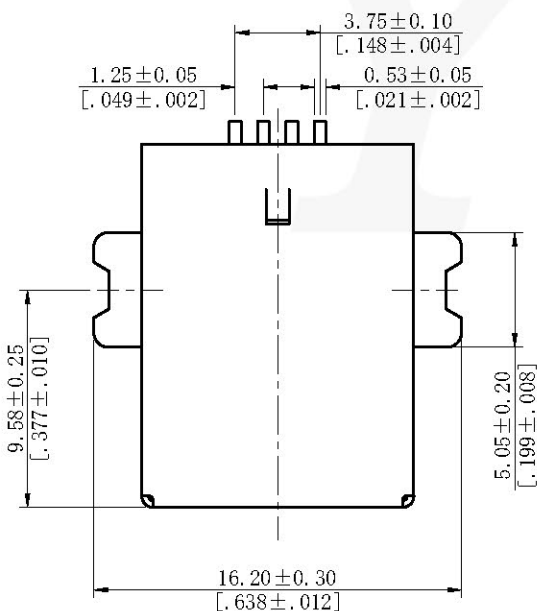


REV	REVISION	NAME	DATE

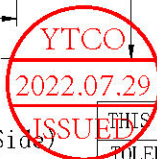


**Electrical:**  
 Voltage Rating:30V DC  
 Current Rating:1.5AMP  
 Contact Resistance:30mΩ Max  
 Insulation Resistance:1000MΩ Min  
 Dielectric Withstanding Voltage:500V AC  
**Mechanical:**  
 Housing Material:9T (UL94V-0)  
 Contact Material:Copper Alloy (C5191)  
 Contact Plating:Gold Or Tin Plating Over Nickel.  
 Shell:SPCC Or Copper Alloy  
 Shell Plating:Gold Or Nickel  
**Environmental:**  
 Operating Temp Range:-40°C~+60°C



Ordering Code:  
 6422-04FM XX X XX X X01

Contact Plating S0=GoldFlash/Tin S1=3u" Gold/Tin S2=5u" Gold/Tin S3=10u"Gold/Tin S4=15u"Gold/Tin S5=30u"Gold/Tin C0=Gold Flash	Shell Material A=Stainless steel B=Brass S=SPCC	Shell Plating NI=Nickel C0=Gold Flash C1=3u" Gold C2=5u" Gold C3=10u"Gold C4=15u"Gold C5=30u"Gold	Color Insulator B=Black W=White U=Blue R=Red Y=Yellow	Packing A=Tray R=Tape &Reel
---	--	--	--	--------------------------------------



Recommended P.C.B Layout (Top Side)  
 (PCB BOARD TOLERANCE ± 0.05)

THIS DRAWING IS A CONTROLLED DOCUMENT				YTCO TECHNOLOGY HTTP://WWW.YTCO.CO E-MAIL:SALES@YTCO.CO	
TOLERANCES UNLESS OTHERWISE SPECIFIED		UNITS mm/inch	SCALE FIT	SIZE A4	TITLE USB TYPE B SMT BOARD MOUNT FEMALE
0 PLC ± —	1 PLC ± 0.30/.012	DRAWN BY Xu	DATE 7/29/2022	PART NO. 6422-04FMXXXXXXXXX01	FILE PATH A/D/YTCOTZ/USB/USB-B
2 PLC ± 0.25/.010	3 PLC ± 0.20/.008	ENGINEER Zhang	DATE 7/29/2022	SHEET 1 OF 1	REV A
4 PLC ± 0.10/.004	ANGLES ± 3°	CHECKED BY Mike	DATE 7/29/2022		
		APPROVED BY Andy	DATE 7/29/2022		
		PROJ. 594309442	FACE CODE		